



KEILOR 202 (3+1) – METRO FACADE

FAÇADE IS FOR ILLUSTRATION PURPOSES ONLY.

 3+1  2+1  1+1  1+1

LOT 190 WOODLINKS, COLLINGWOOD PARK

Land Size	420 m ²
Land Price	\$192,000
Registration	Registered
House Size	201.35 m ²
House Price	\$301,718

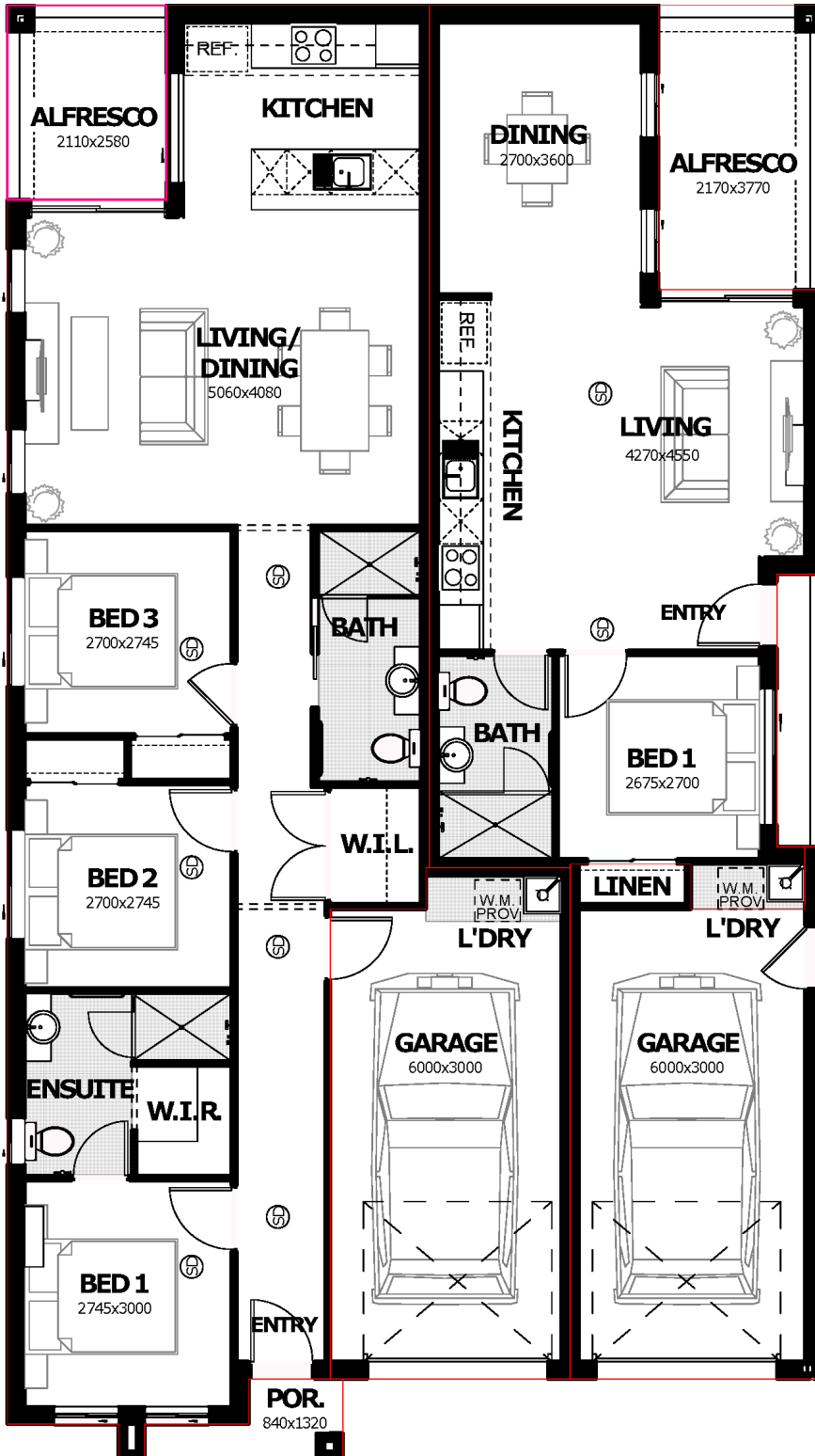
TOTAL FIXED TURNKEY PRICE:

\$493,718

PACKAGE HIGHLIGHTS

- ✓ Full Turnkey, Fixed Price, Silkwood Gold Inclusions
- ✓ **Combination of render & cladding to front façade**
- ✓ Exposed aggregate driveway & turfing to entire lot
- ✓ Full timber paling fencing and landscaping package
- ✓ Three coat Dulux premium paint system
- ✓ Quality floor coverings - carpet & tiles throughout
- ✓ Superior LED lighting package throughout entire house (excl. garage)
- ✓ Designer kitchen with Westinghouse stainless steel cooktop, oven & range hood
- ✓ Overhead cupboards & stainless-steel dishwasher
- ✓ 3 x split system air conditioners
- ✓ Ceramic tiled splashbacks to kitchens & laundries
- ✓ 20mm stone benchtops to kitchens and bathrooms
- ✓ **BAL 12.5 bushfire construction requirement**
- ✓ Building approval and water application fees included
- ✓ Colorbond roof & barrier screens to windows & doors
- ✓ Ceiling fans in every bedroom, living area & alfresco
- ✓ Approved Fire Separation wall between Dwelling A & B
- ✓ 20 Year Structural Guarantee

KEILOR 202 (3+1)



Dwelling A:

Living	90.57 m ²
Garage	20.90 m ²
Porch	1.99 m ²
Alfresco	5.44 m ²
Total	118.90 m²

Dwelling B:

Living	50.00 m ²
Garage	21.99 m ²
Porch	2.17 m ²
Alfresco	8.29 m ²
Total	82.45 m²
Grand Total	201.35 m²